
Polish Migration to the North East of England: Social Capital and Integration

Helen Lowther
06/05/09
EGRG London

Presentation outline:

- Introduction
 - Background and context to study
 - MA Study
 - PhD research
 - Proposed methods
 - Ethical and practical issues
 - Summary
-

Introduction

- 1+3 Studentship
- MA research



Background and context to study

- In May 2004 ten new states joined the European Union (EU)
 - Controversial – ongoing debate
 - Implications of migration to the UK
 - Work experiences of migrants
(Dustmann et al, 2003; Wallace, 2002; Wallace and Stola, 2001; Spencer et al, 2006)
 - Less attention to experience beyond the workplace
-

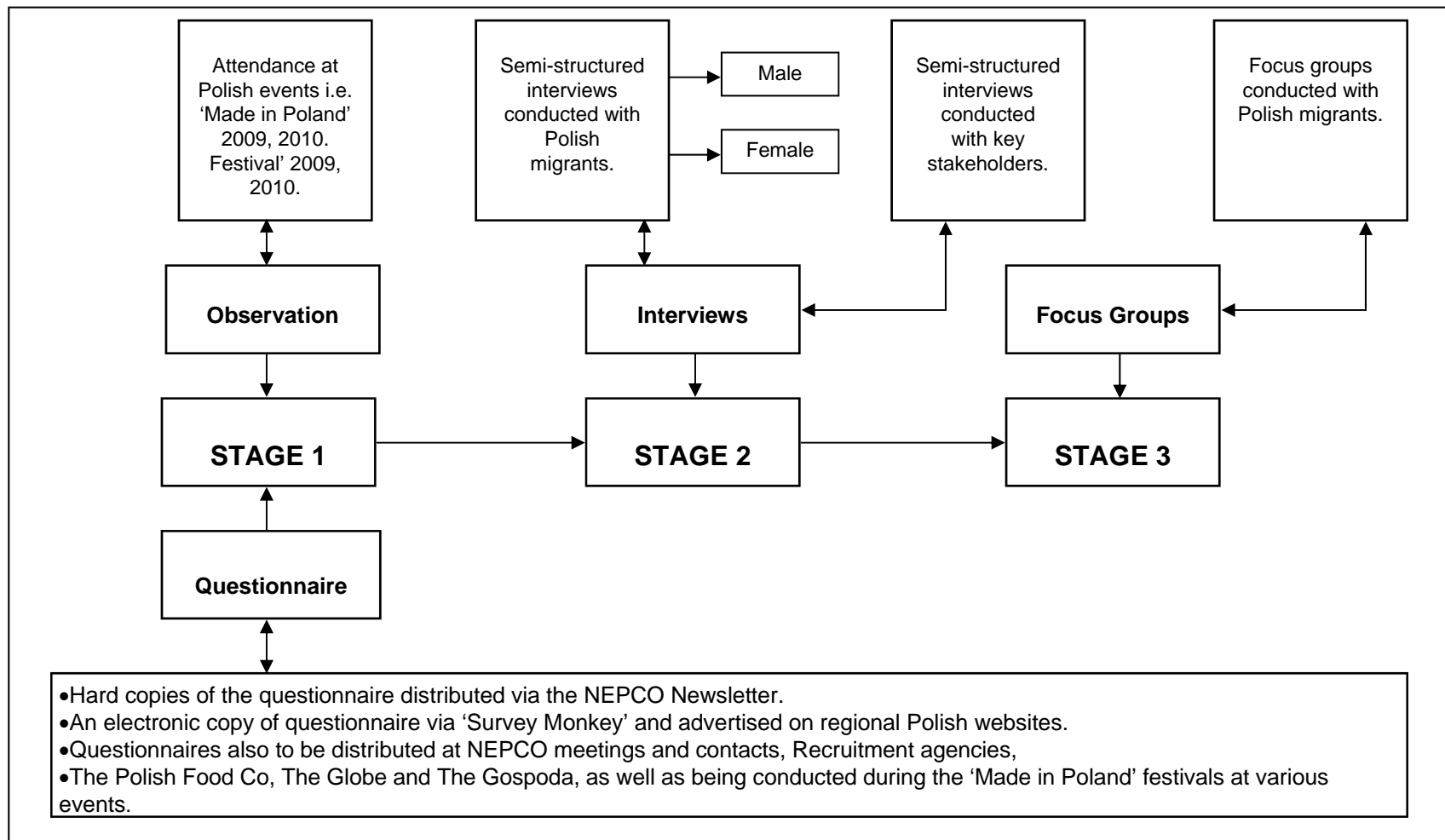
MA study

- Participation of Polish migrants in cultural activities in the NE
 - Case study approach over 3 stages:
 1. Questionnaires/observation
 2. In-depth interviews
 3. Focus groups
 - Limitations
-

PhD Research

- What type of activities lead to increased levels of interpersonal trust and broaden social connections for Polish migrants in the NE?
 - What is the relationship between social capital and integration for this group.
 - Does this directly or indirectly affect the migrants decision to stay or leave?
-

Proposed methods



Ethical and Practical issues

- **Harm and Risk**
 - What might this study do to hurt people involved?
 - How likely is it that such harm will occur?
 - How to be sensitive when asking questions?
- **Honesty and Trust**
 - What is my relationship with the people that I am studying?
 - Am I telling the truth?
 - Do we trust each other?
- **Privacy, Confidentiality and Anonymity**
 - In what ways will the study intrude or come closer to people than they want?
 - How will information be guarded?
 - How identifiable are the individuals and organisations studied?
- **Intervention and Advocacy**
 - What do I do when I see harmful, illegal or wrongful behaviour by others during a study?
 - Should I speak for anyone's interests other than my own?
 - If so, whose interests to I advocate?

Adapted from Miles and Huberman (1994:p292)

Summary

Through a case study of Polish migrant participation in the cultural sector in the NE, the PhD will seek to examine:

- The way in which Polish migrants in the region build social capital.
 - The relationship between social capital and integration for this group.
 - The impact this relationship has upon the migrant's decision to stay or leave the region.
-